



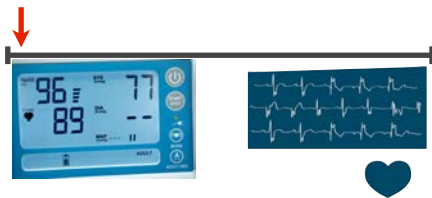
Pacemaker optimization

Rate drop response

Cardioinhibitory syncope



- Vasovagal response
- Carotid sinus hypersensitivity
- Situational reflex syncope

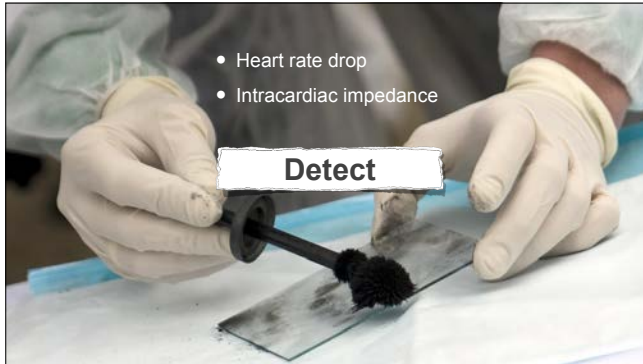


The spectrum

Not available on all pacemakers!



Rate drop response



- Heart rate drop
- Intracardiac impedance

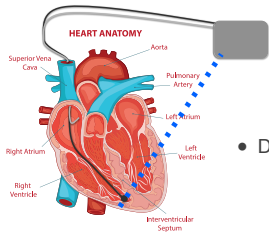
Detect

Heart rate drop

Sudden decrease in heart rate ✓

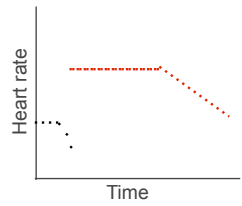
In a set time ✓

Below a certain heart rate ✓



- Decrease in contractility

Intracardiac impedance



- Increase heart rate
- 100 bpm
- 2 minutes
- Gradual return

Intervention

Takeaway message



Rate drop response is the feature a pacemaker **must have** if it is being used to treat cardioinhibitory syncope.
